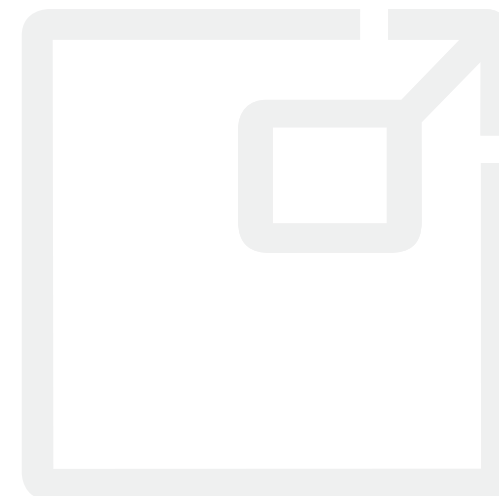


<b>9</b>	<b>DE</b> Gebrauchsanweisung.....	Seite 1	<b>NO</b> Bruksanvisning .....	Side 17
	<b>GB</b> Instructions for use .....	Page 3	<b>FI</b> Käyttöohje .....	Sivu 19
	<b>FR</b> Mode d'emploi .....	Page 5	<b>CS</b> Návod k použití.....	Strana 21
	<b>ES</b> Instrucciones de uso .....	Pág. 7	<b>PL</b> Instrukcja obsługi.....	Strona 23
	<b>IT</b> Istruzioni per l'uso .....	Pagina 9	<b>RO</b> Instrucțiune de utilizare .....	Pagina 25
	<b>PT</b> Instruções de uso .....	Página 11	<b>TR</b> Kullanım kılavuzu .....	Sayfa 27
	<b>NL</b> Gebruiksaanwijzing.....	Pagina 13	<b>RU</b> Инструкция по использованию....	страница 29
	<b>SE</b> Bruksanvisning .....	Sida 15	<b>JP</b> 取扱説明書 .....	P. 31



PHALLOSAN<sup>®</sup> forte

# INSTRUCTIONS FOR USE

Congratulations on purchasing your PHALLOSAN® forte! PHALLOSAN® forte has been being used around the world with much success for 14 years. Prescription PHALLOSAN® forte is reimbursed by the health insurance companies. Our team consisting of urologists and medical technicians developed what we think is the most effective and innovative product of its kind, PHALLOSAN® forte.

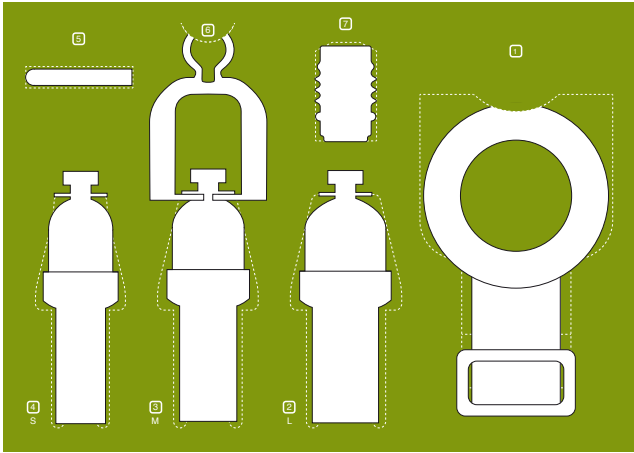
## Indications:

PHALLOSAN® forte is recommended as a treatment for

- » penis enlargement-penis extension
- » congenital/acquired penile curvature and induratio penis plastica (IPP)
- » erectile dysfunctions
- » post-surgical follow-up treatment after prostate surgery
- » training the cavernous body of the penis at any age

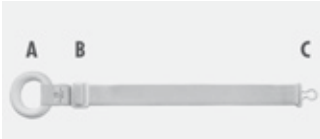
## Package contents:

1. Elastic belt, which is strapped around the waist incl. foam-rubber ring (A), into which the penis is inserted all the way to the base. The buckle (B), with which you can adjust the length of the belt individually and adapter (C) on the belt, which is connected to the suction bell.
2. Suction bell in size L with PHALLOSAN® forte – L-sleeve condom
3. Suction bell in size M with PHALLOSAN® forte – M-sleeve condom and assembled tension clip (6)
4. Suction bell in size S with PHALLOSAN® forte – S-sleeve condom
5. Protector cap to protect glans against strong tension settings.
6. Tension clip with tension spring attachment to adjust the intensity of the tension using a traffic light colour code system with adapter for the belt.
7. Suction ball with 3-way valve
8. DVD PHALLOSAN® forte
9. Instructions for use
10. Measuring template



## Preparation

### 1. Belt



Spread the orthopaedic PHALLOSAN® forte belt out in front of you and adjust it to its longest length using the buckle (B).

### 2. Selection of the suction bell/sleeve condom

Determine your correct suction bell size using the enclosed measuring template (10). Pull the flaccid penis away from your body and take measurement on the penis shaft.



The bell in size M (3) is already connected to the sleeve condom size M (3) and the tension clip with tension spring attachment in the set.

Should you require a different size, please remove the tension clip (6).

Now, please take your appropriate bell and adapt it using the suction ball; it only snaps into the position with the arrow symbol (↕). The appropriate sleeve condom (2) is slipped over the bead of the bell and the tension clip (6) is reattached.



When attaching to the bell, it must be observed that the bead of the bell snaps into the groove on the sleeve condom on the thick end of the sleeve condom. If the sleeve condom is pulled too far over the bead of the bell, the sleeve condom can rupture.



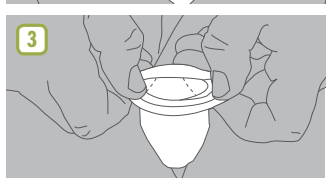
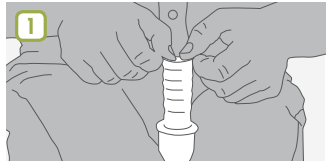
**Top:** Wrong, pulled too far over the bell and not powdered!

**Bottom:** Right and powdered.

Please observe that the sleeve condom loses its coating after several days. Therefore, you should purchase baby powder and apply this to the outer surface of the sleeve condom. It forms a protective coat, which protects the sleeve condom against friction, adhesion and tearing.

Clamp the suction bell between your knees. With a slight pull, carefully roll the sleeve condom 0.40 inch to the edge of the suction bell and pull it behind the bead of the suction

bell. Please be careful and do not damage the sleeve condom with sharp fingernails or the like. Do not pull hard when rolling back.



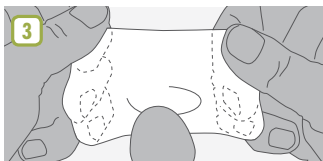
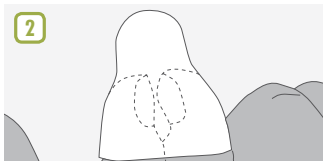
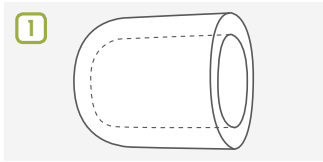
## Special features of the new PHALLOSAN® forte sleeve condoms

The PHALLOSAN® forte sleeve condoms consist of medical silicone, thus ruling out the risk of irritation or allergic reactions. This innovation not only offers you more comfort but also provides a uniquely snug fit around the penis. A part of it is approx. 3 mm thick, that is where it is attached to the bell; its thinnest area is 0.3 mm thick, to smoothly adapt to the shaft of your penis.

Your perfect suction bell is now ready for use!

### 3. Protector cap

Please remove the protector cap (5), which fits any penis size. Pull the protector cap apart using both hands and slip it over the glans. It should fit snugly.



After fitting the cap, it is important to make sure that as little air as possible remains at the tip of the glans. It can be helpful to slip the protector cap over the penis when the latter is in a slightly erected state. The protector cap should protect the glans against the effects of possible excess tension.

Experienced users can usually do away with the protector cap after a few weeks.

All necessary preparations for the application have now been completed.

## Application:

1. Now, insert the penis including the protector cap into the suction bell and roll the sleeve condom back from the bead of the bell over the penis.



2. Turn the green protruding marker on the valve of the suction ball (7) to the suction symbol and press the suction ball several times with your fingers. By doing so, the glans is drawn further into the bell. The sleeve condom smoothly adapts to the shaft of the penis.



3. Now, turn the green protruding marker on the valve of the suction ball (7) to the lock symbol, to maintain the micro-vacuum.



4. Now, please take the belt previously spread out before you and slip the white foam-rubber ring (A) over the complete suction bell apparatus until it rests against the root of the penis.

5. Now, pull the end of the belt around your waist.

6. Turn the open end of the tension clip (6) towards your body and connect both eyelets (C).



7. Tighten the fit of the belt using the belt buckle (B) until you can feel that your penis is being stretched and the traffic light colour code system indicates green. Please make sure that the belt slants upwards in the groin area. To do this, pull the belt upwards around the buttocks towards the waist. If the belt slips to the fold of the buttocks, i.e. parallel to the penis, the tension will be further increase when sitting, which may be unpleasant.



8. You can now carry on with your everyday business or also wear PHALLOSAN® forte while sleeping, given that your blood circulation is not restricted at any time.

### Ending the application

First, please take the belt off and turn the green protruding marker on the valve of the suction ball to the arrow symbol. The vacuum escapes. Please roll the sleeve condom back carefully towards the glans and remove the suction bell apparatus.

### Special technical features

Put simply, this apparatus is a suction bell with a seal. Therefore, it is not important how far the sleeve condom reaches over the penis shaft. The sleeve condom is not designed to transmit force to the penis. This solely takes place by the micro-vacuum formed in the bell.

Should you feel that the vacuum has slightly decreased while wearing the apparatus and the glans has possibly slipped too far out of the bell, this can be the result of several factors. In any case, air is penetrating. This can take place via the penis shaft if pubic hair was not diligently removed or a sleeve condom, which is too wide, was selected.

As far as necessary, please remove possible pubic hair from the penis. This can be done by shaving or using a mild hair removal cream.

### Remedy

Turn the green protruding marker on the valve of the suction ball away from the lock symbol to the suction symbol. In this manner, draw the glans back into the bell and close the valve by turning the green protruding marker back towards the lock symbol.

If the glans is still slipping out of the bell, the cause is definitely the sleeve condom, which is apparently too wide.

1. You have the option of adjusting this individually to your size and in doing so, achieving optimum efficiency. For example, if you feel that the M bell is the correct size but the sleeve condom is too large for the penis shaft, you can place the S sleeve condom on the M bell. You can do the same with the L bell and the M sleeve condom.

Under no circumstances can you place the S sleeve condom on the L bell. This can cause the material to rupture.

### Instructions for care:

The sleeve condom can and should be detached from the bell and should be washed in lukewarm water for hygienic reasons.

Keep the sleeve condom rolled up until you need it again.

Please never forget to apply baby powder to the outside of the sleeve condom after use when rolled out.

The suction bell should also be cleaned daily as described above. Do not forget to remove the suction ball first by moving the green protruding marker on the valve of the suction ball towards the double arrow. Carefully pull the suction ball out of the suction bell. The suction ball may not come in contact with water or oil because the sensitive valves would then no longer function efficiently.

### Step-by-step plan for the precise adjustment of the tension of the belt to the connective tissue of the penis.



### Preamble:

The body's connective tissue depends on the respective hereditary disposition. Therefore, we developed a traffic light colour code system, to enable you to adjust the belt tension precisely to your type of connective tissue. In any case, please make sure that the tension is in the lower green range in the beginning. This will help you achieve optimum results for penis enlargement in length and width without any negative side-effects.

### Day 1

Only set the tension in the lower green range and do not wear PHALLOSAN® for more than 1 hour. Remove the belt and turn the green protruding marker on the valve of the suction ball towards the arrow symbol. The vacuum escapes.

Carefully roll the sleeve condom back towards the glans and remove the suction bell apparatus.

Now, examine the point on the penis between the opening of the urethra and the frenulum on the underside of the glans. This is the most sensitive tissue on the penis. If it is reddened or swollen, the belt tension was too tight. Suspend the application for today. If you detect changes on the penis, do not begin application again until these have subsided.

### Day 2 to 8

If you were able to wear PHALLOSAN® forte on the previous day without suffering from discolouration or swelling on the points in question, you can wear PHALLOSAN® one hour longer.

Extend the period of wear every day by one hour. After 8 days you will have adjusted to wearing the apparatus.

After the adjustment period PHALLOSAN® can also be worn at night. You will notice that you can feel nubs on both symbols for pumping and locking, which enables pumping or locking without having visual contact. The sleeve condom expands during night-time erections; circulation is not impeded, it is improved.

You will wear PHALLOSAN® forte with enthusiasm. Your penis can become measurably longer and thicker in only a few weeks. You will experience positive side effects such as a stronger sex drive and greater pleasure.

### Period of application:

PHALLOSAN® should be worn 8–10 hours per day, 6 days a week, and at any time even longer!

### Side effects/Precautions

PHALLOSAN® forte is used at your own risk however, it does not pose any risks if used according to the instructions. Particularly during the first weeks of application, excess tension on the penis should be avoided.

If swelling and/or blisters occur on the foreskin or on the glans, the belt will have been set too tight. It is imperative to discontinue use until the swelling or blisters have disappeared. Then set the tension somewhat looser. Please be patient, the success of the penis enlargement process can be compared to that of an orthodontic treatment. The continuity of elongation and not the amount of tension alone is a guarantee for successful results!

Occasionally you can feel pressure pain on the penis shaft; this can result from the bulging end of the sleeve condom resting on the silicone rubber-foam ring and therefore, cause pain.

### Remedy:

Slightly roll the end of the sleeve condom back from the silicone rubber-foam ring; pressure pain will no longer occur.

You can also distribute the tension of the belt over the body, to reduce tension on the root of the penis. Take hold of the belt where the suction bell is connected to it and lead the tension around the body to relieve the root of the penis. It sounds complicated but it is not; the tension is now distributed throughout the entire area of the belt.

### You should not wear PHALLOSAN® forte under the following circumstances:

After consuming alcohol, after taking drugs as well as painkillers, sleeping pills and tranquilizers because your natural perception of pain may be compromised and you may not be able to promptly react to pain. Avoid using PHALLOSAN® forte in the event of infections or open wounds on the penis.

### How do I measure the exact increase in the length of my penis?

Please use a foot rule. A measuring tape is not suitable. Hold your penis in a flaccid state away from your body (90 degrees). Position the foot rule on the side of your penis (as seen looking down). Press the rule against your pubic bone.

### Important

Before beginning with the application, determine your exact body weight without clothing. In the event of a possible weight gain, a layer of fat forms – in particular – in the pubic area of the pubic hair around the penis. This layer of fat reduces the distance between the tip of the penis and the pubic bone, thus falsifying (shortening) the result. Physicians call this an abdominal apron.

### Repeat orders

All parts for PHALLOSAN® forte can be reordered individually from us. Should you have any other questions or suggestions, feel free to contact our experts at any time free of charge. You merely have to pay the normal telephone charges. At all times, we reserve the right to make technical modifications, which we will also make available on the Internet at [www.phallosan.at](http://www.phallosan.at), [www.phallosan.de](http://www.phallosan.de) [www.phallosan-info.ch](http://www.phallosan-info.ch).

### Hotline in Germany, Austria and Switzerland.

Orbis Consulting GmbH,  
Maximilianstr. 9

D-823419 Starnberg

Managing Director Dipl. Kfm. U. Jochum  
VAT-ID. DE 282630327

Tel.: +49 (0)81 51 971 89 10

Fax: +49 (0)81 51 971 89 20

Email: [info@phallosan.com](mailto:info@phallosan.com)

### Manufacturer:

Orbis LTD.

UB3A Industrial Estate  
SAN Gwann, SGN 3000

VAT-ID. MT 20540812

Company REG. C 53679

Tel.: +356 21 47 02 76

Fax: +356 21 47 02 77

Email: [info@phallosan.com](mailto:info@phallosan.com)  
Malta, 11.2012